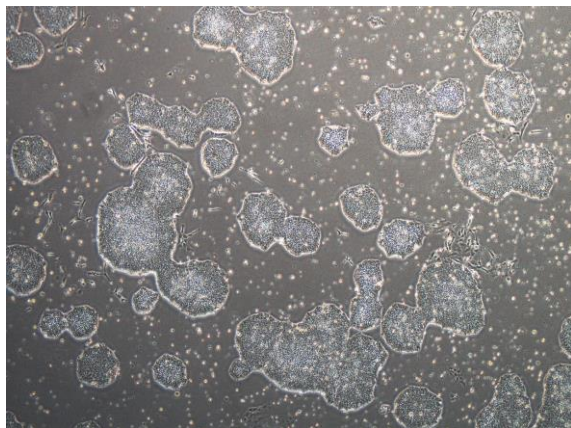
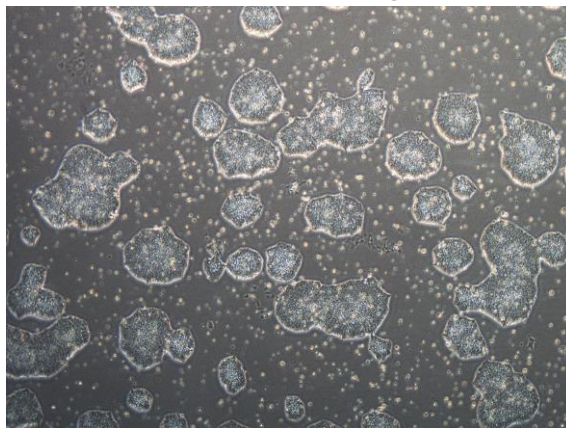


## 【 CiRA-j-1186 】 Morphology of iPSC colonies

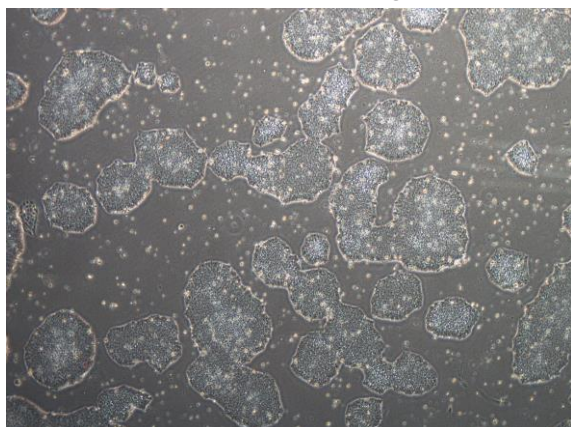
CiRA-j-1186-A: passage-2



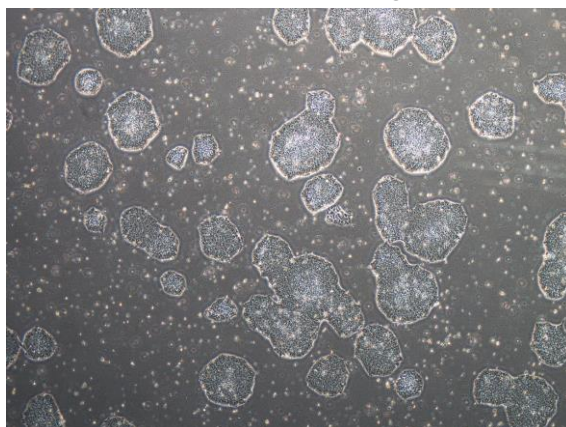
CiRA-j-1186-B: passage-2



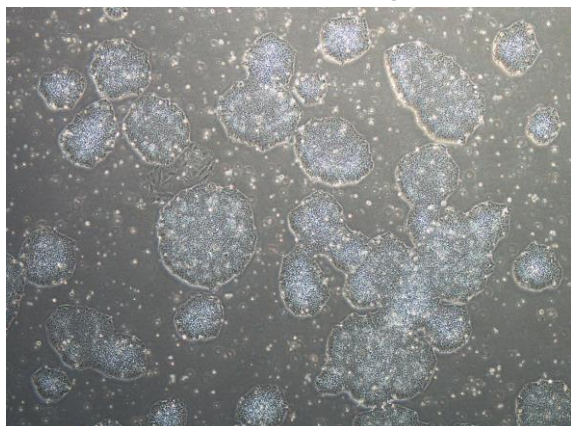
CiRA-j-1186-C: passage-2



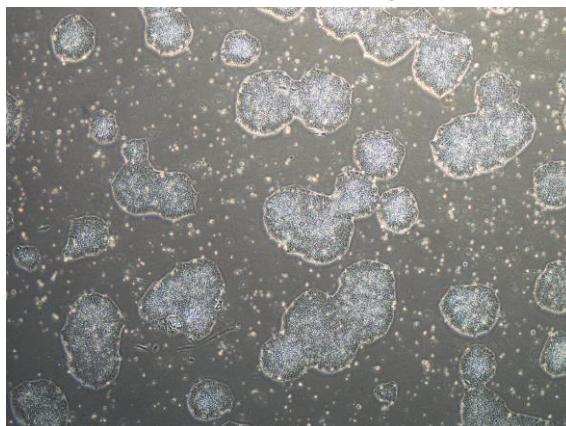
CiRA-j-1186-D: passage-2



CiRA-j-1186-E: passage-2



CiRA-j-1186-F: passage-2



( All images were captured at 4x magnification )